



## Great North Way

Hendon, London NW4 1PQ

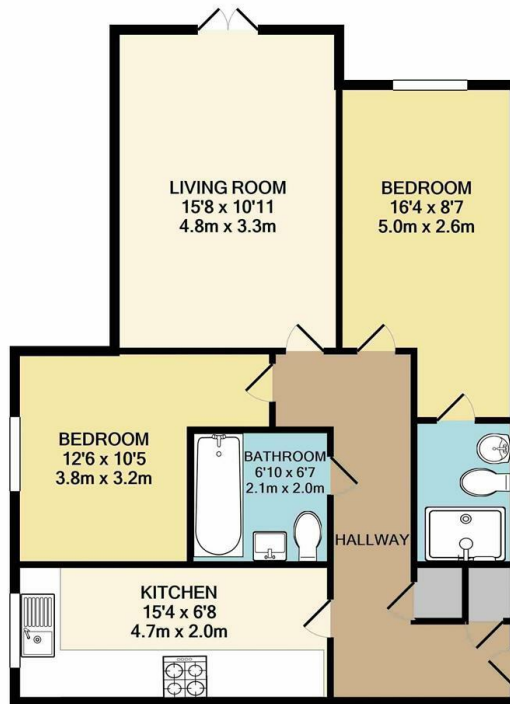
- 2 Double bedrooms
- Modern fitted kitchen
  - Allocated parking
  - Communal gardens
- Ready from 10th July 2025
- Spacious living room
- 2 Bathrooms (1 en suite)
  - Ground floor
  - Unfurnished Only
- Dishwasher and washing machine

**£1,500 PCM**





Local Authority **Barnet**  
Council Tax Band **E**  
EPC Rating



TOTAL APPROX. FLOOR AREA 698 SQ.FT. (64.9 SQ.M.)  
GIA measurements are approximate. Not to Scale. Illustrative purposes only  
Made with Metropix ©2020

**Mill Hill Office**  
Concorde House Grenville Place, Mill Hill,  
London, NW7 5SA

**Contact**  
0203 544 1561  
[raphael@housemanhomes.co](mailto:raphael@housemanhomes.co)  
[www.houseman-properties.com](http://www.houseman-properties.com)

Agents Note: Whilst every care has been taken to prepare these particulars, they are for guidance purposes only. All measurements are approximate and for general guidance purposes only and whilst every care has been taken to ensure accuracy, they should not be relied upon and potential buyers/tenants are advised to recheck the measurements.

